



## Insightful Analysis. Innovative Solutions.

Onpoint's legacy of delivering revolutionary analytic solutions began in the 1970s with our groundbreaking work on regional variation in care and cost. More than 40 years later, we continue to provide our clients with independent, reliable, and innovative analysis and reporting. Backed by the most-advanced methodologies, expansive measures production, and cutting-edge applications, Onpoint helps our clients make informed policy decisions to advance healthcare transformation.

### CUTTING-EDGE ANALYTIC APPLICATIONS

From our landmark tri-state variation study and demonstrations of the HealthPartners' Total Cost of Care measurement system to explorations of Medication-Assisted Treatment to fight opioid use, Onpoint's Analytic Services team constantly collaborates and innovates to produce high-quality, actionable data solutions that our clients can use with confidence to help inform analyses and downstream decisions.

### EMPOWERING INFORMED DECISION-MAKING

Onpoint's analytic and reporting solutions empower our clients and their users to engage with their data to produce meaningful analyses through a wide range of delivery options. From ad hoc data sets to secure, cloud-based environments featuring role-based access, Onpoint uses contemporary technologies and innovative approaches to ensure that our clients have the solutions that they need.

Onpoint also offers a suite of add-on services, including Tableau-based business intelligence, so users can explore their data with maximum flexibility in a feature-rich environment. Each of our solutions has been designed with one goal in mind: offering our clients valuable insights that inspire breakthroughs into how care is delivered.



### ANALYTICS & REPORTING

Standard and customizable analytic and reporting solutions generated through the use of diverse data streams and a suite of proven methods, industry-standard tools, and Onpoint's powerful Measures Engine



### DATA DELIVERY

Data delivery solutions tailored to put sensitive, meaningful data in the hands of key decision-makers securely, efficiently, and effectively



### END-USER SUPPORT

Expert in coding standards, claims adjudication, research methods, analytic tools, and privacy and security laws, our team assists end users in the understanding of data transformation activities



### LEARN MORE ABOUT ONPOINT

- Give us a call at 207-623-2555
- Visit us online at [www.onpointhealthdata.org](http://www.onpointhealthdata.org)



## WE HELP OUR CLIENTS ANALYZE THEIR DATA

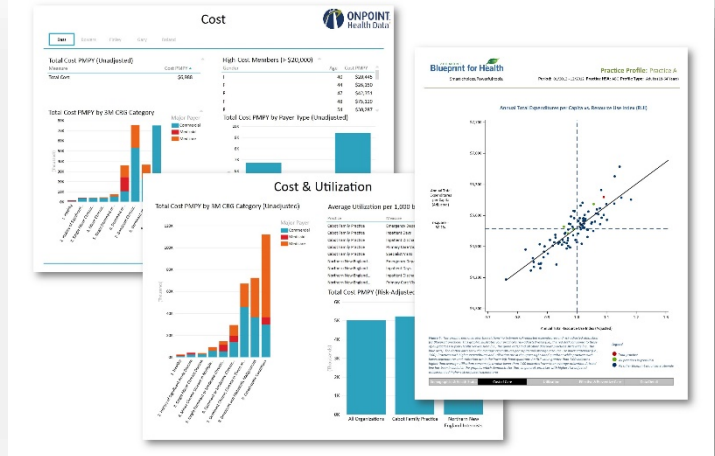
**Geographic variation analyses.** Our landmark tri-state variation study has served as the basis for multiple follow-on analyses with our partners, including the Dartmouth Institute's Atlas reporting, a national demonstration of HealthPartners' Total Cost of Care measurement system, and pediatric variation projects.

**Provider reporting systems.** Our team regularly generates comparative provider, practice, community, and program profiles featuring a broad range of performance measures, predictive models, and stratified analyses.

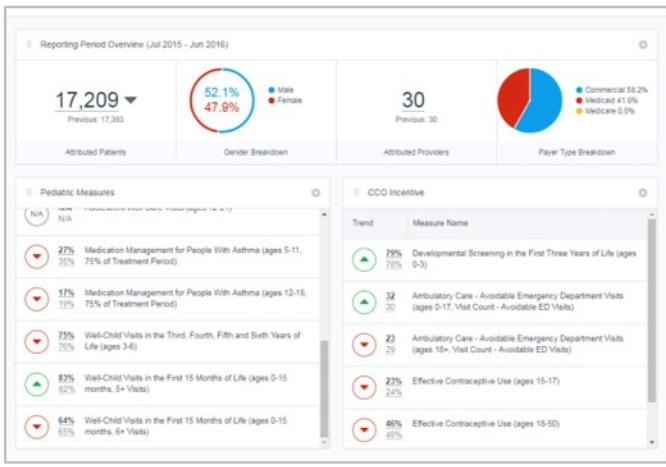
**Visit our website to learn more:** Comparative cost analyses, program evaluations, special studies, and white papers



## Practice & Provider Reporting



## Performance Reporting Portal



## WE HELP OUR CLIENTS UNDERSTAND THEIR DATA

**Collaborative end-user communities.** Onpoint builds a transparent knowledge base for our clients' end users by producing a wide array of documentation, including data dictionaries, user guides, technical backgrounders, video tutorials, and data FAQs.

**Tailored training programs.** To support knowledge transfer and cross-training needs on the data and its analytic use cases, Onpoint provides one-on-one and group webinar trainings for clients and their stakeholders.

**Visit our website to learn more:** Online collaboration and support services, user group meetings



## WE HELP OUR CLIENTS DELIVER THEIR DATA

**Analytic Enclave.** Onpoint's Analytic Enclave is a secure environment where clients and their authorized data users can store, access, and interact with their data. Applications available in the Enclave include Microsoft Office, R, SAS, SQL Workbench, and Tableau.

**Performance Reporting Portal (PRP).** Onpoint's PRP allows users to customize dynamic dashboards, drill into measures results, request reconsideration of results, perform trending, and manage their provider and practice rosters to ensure the most accurate attribution and provider mastering.

**BI Reporting Solution.** Onpoint's BI reporting solution features a series of data marts that facilitate rapid analysis across a series of key reporting domains. These Tableau-based reports allow users to intuitively explore key areas of interest, including healthcare cost and utilization, demographics, and quality and preventive care.



## Support Documentation & User Guides

